



Current Issue
November 2013
Table of Contents »

NATIONAL GEOGRAPHIC

ngm.com

HOME FEATURES PHOTOGRAPHY INSTAGRAMS PROOF FOUND PHENOMENA YOUR SHOT PUZZLES VIDEO ARCHIVES SUBSCRIBE

Feature Article | Gallery: Why Seas Rise | **Gallery: Damage Done** | Interactive: If All The Ice Melted | Graphic: Superstorm 2100 | Map: Uneven Impacts | Graphic: Rising Seas

The Damage Done

- ADVERTISEMENT -

By the time Sandy struck the Northeast, it had killed 72 people in the Caribbean. It was no longer a hurricane—but it was a thousand miles wide, with 80-mile-an-hour winds that drove the sea onto the coast in lethal surges. The final death toll was 147. As the world warms, it may see more storms like Sandy. It will certainly see higher seas.



Share



Photograph by Stephen Wilkes

Superstorm Sandy narrowed New Jersey's beaches by more than 30 feet on average. At Seaside Heights it swept away the pier under the roller coaster.

Celebrating 125 Years



The New Age of Exploration

Every month we'll be celebrating the spirit of exploration. Join the adventure.



Photo Galleries

Browse through photos of the most memorable moments in National Geographic's 125 years.



Risk Takers

They snare poisonous snakes, drill into glaciers, probe cat parasites—and always push the limits.

Frame What Matters



Current Issue
November 2013
Table of Contents »

NATIONAL GEOGRAPHIC

ngm.com

HOME FEATURES PHOTOGRAPHY INSTAGRAMS PROOF FOUND PHENOMENA YOUR SHOT PUZZLES VIDEO ARCHIVES SUBSCRIBE

Feature Article | Gallery: Why Seas Rise | **Gallery: Damage Done** | Interactive: If All The Ice Melted | Graphic: Superstorm 2100 | Map: Uneven Impacts | Graphic: Rising Seas

The Damage Done

- ADVERTISEMENT -

By the time Sandy struck the Northeast, it had killed 72 people in the Caribbean. It was no longer a hurricane—but it was a thousand miles wide, with 80-mile-an-hour winds that drove the sea onto the coast in lethal surges. The final death toll was 147. As the world warms, it may see more storms like Sandy. It will certainly see higher seas.



Share



Photograph by Iwan Baan, Reportage by Getty Images

In Manhattan, Sandy's surging tide knocked out a Con Ed substation, darkening the city below Midtown, including the blue glow of the new World Trade Center, whose base is three feet above sea level.

Celebrating 125 Years



The New Age of Exploration

Every month we'll be celebrating the spirit of exploration. Join the adventure.



Photo Galleries

Browse through photos of the most memorable moments in National Geographic's 125 years.



Risk Takers

They snare poisonous snakes, drill into glaciers, probe cat parasites—and always push the limits.

Frame What Matters



Current Issue
November 2013
Table of Contents »

NATIONAL GEOGRAPHIC

ngm.com

HOME FEATURES PHOTOGRAPHY INSTAGRAMS PROOF FOUND PHENOMENA YOUR SHOT PUZZLES VIDEO ARCHIVES SUBSCRIBE

Feature Article | Gallery: Why Seas Rise | **Gallery: Damage Done** | Interactive: If All The Ice Melted | Graphic: Superstorm 2100 | Map: Uneven Impacts | Graphic: Rising Seas

The Damage Done

- ADVERTISEMENT -

By the time Sandy struck the Northeast, it had killed 72 people in the Caribbean. It was no longer a hurricane—but it was a thousand miles wide, with 80-mile-an-hour winds that drove the sea onto the coast in lethal surges. The final death toll was 147. As the world warms, it may see more storms like Sandy. It will certainly see higher seas.



Share



Photograph by Davina Grincevicius

After a long day of organizing relief efforts, Brandon d'Leo, a surfer and sculptor, rests in his candlelit apartment in the Rockaway Beach neighborhood of Queens, New York. Like many of his neighbors, d'Leo lost electricity for a few days—and heat and hot water for more than two months—after Sandy pounded the community.

Celebrating 125 Years



The New Age of Exploration

Every month we'll be celebrating the spirit of exploration. Join the adventure.



Photo Galleries

Browse through photos of the most memorable moments in National Geographic's 125 years.



Risk Takers

They snare poisonous snakes, drill into glaciers, probe cat parasites—and always push the limits.

Frame What Matters



Current Issue
November 2013
Table of Contents »

NATIONAL GEOGRAPHIC

ngm.com

HOME FEATURES PHOTOGRAPHY INSTAGRAMS PROOF FOUND PHENOMENA YOUR SHOT PUZZLES VIDEO ARCHIVES SUBSCRIBE

Feature Article | Gallery: Why Seas Rise | **Gallery: Damage Done** | Interactive: If All The Ice Melted | Graphic: Superstorm 2100 | Map: Uneven Impacts | Graphic: Rising Seas

The Damage Done

- ADVERTISEMENT -

By the time Sandy struck the Northeast, it had killed 72 people in the Caribbean. It was no longer a hurricane—but it was a thousand miles wide, with 80-mile-an-hour winds that drove the sea onto the coast in lethal surges. The final death toll was 147. As the world warms, it may see more storms like Sandy. It will certainly see higher seas.



Share



BROOKLYN, NEW YORK

Photograph by Kirsten Luce, New York Times/Redux

Celebrating 125 Years



The New Age of Exploration

Every month we'll be celebrating the spirit of exploration. Join the adventure.



Photo Galleries

Browse through photos of the most memorable moments in National Geographic's 125 years.



Risk Takers

They snare poisonous snakes, drill into glaciers, probe cat parasites—and always push the limits.

Frame What Matters



Current Issue
November 2013
Table of Contents »

NATIONAL GEOGRAPHIC

ngm.com

HOME FEATURES PHOTOGRAPHY INSTAGRAMS PROOF FOUND PHENOMENA YOUR SHOT PUZZLES VIDEO ARCHIVES SUBSCRIBE

Feature Article | Gallery: Why Seas Rise | **Gallery: Damage Done** | Interactive: If All The Ice Melted | Graphic: Superstorm 2100 | Map: Uneven Impacts | Graphic: Rising Seas

The Damage Done

- ADVERTISEMENT -

By the time Sandy struck the Northeast, it had killed 72 people in the Caribbean. It was no longer a hurricane—but it was a thousand miles wide, with 80-mile-an-hour winds that drove the sea onto the coast in lethal surges. The final death toll was 147. As the world warms, it may see more storms like Sandy. It will certainly see higher seas.



Share



PATH STATION, HOBOKEN, NEW JERSEY

Photograph by Port Authority of New York & New Jersey, AFP Photo

Celebrating 125 Years



The New Age of Exploration

Every month we'll be celebrating the spirit of exploration. Join the adventure.

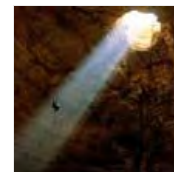


Photo Galleries

Browse through photos of the most memorable moments in National Geographic's 125 years.



Risk Takers

They snare poisonous snakes, drill into glaciers, probe cat parasites—and always push the limits.

Frame What Matters



Current Issue
November 2013
Table of Contents »

NATIONAL GEOGRAPHIC

ngm.com

HOME FEATURES PHOTOGRAPHY INSTAGRAMS PROOF FOUND PHENOMENA YOUR SHOT PUZZLES VIDEO ARCHIVES SUBSCRIBE

Feature Article | Gallery: Why Seas Rise | **Gallery: Damage Done** | Interactive: If All The Ice Melted | Graphic: Superstorm 2100 | Map: Uneven Impacts | Graphic: Rising Seas

The Damage Done

- ADVERTISEMENT -

By the time Sandy struck the Northeast, it had killed 72 people in the Caribbean. It was no longer a hurricane—but it was a thousand miles wide, with 80-mile-an-hour winds that drove the sea onto the coast in lethal surges. The final death toll was 147. As the world warms, it may see more storms like Sandy. It will certainly see higher seas.



Share



RODANTHE, NORTH CAROLINA

Photograph by Steve Earley, Virginian-Pilot

Celebrating 125 Years



The New Age of Exploration

Every month we'll be celebrating the spirit of exploration. Join the adventure.

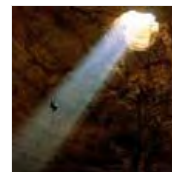


Photo Galleries

Browse through photos of the most memorable moments in National Geographic's 125 years.



Risk Takers

They snare poisonous snakes, drill into glaciers, probe cat parasites—and always push the limits.

Frame What Matters



Current Issue
November 2013
Table of Contents »

NATIONAL GEOGRAPHIC

ngm.com

HOME FEATURES PHOTOGRAPHY INSTAGRAMS PROOF FOUND PHENOMENA YOUR SHOT PUZZLES VIDEO ARCHIVES SUBSCRIBE

Feature Article | Gallery: Why Seas Rise | **Gallery: Damage Done** | Interactive: If All The Ice Melted | Graphic: Superstorm 2100 | Map: Uneven Impacts | Graphic: Rising Seas

The Damage Done

- ADVERTISEMENT -

By the time Sandy struck the Northeast, it had killed 72 people in the Caribbean. It was no longer a hurricane—but it was a thousand miles wide, with 80-mile-an-hour winds that drove the sea onto the coast in lethal surges. The final death toll was 147. As the world warms, it may see more storms like Sandy. It will certainly see higher seas.



Share



STATEN ISLAND, NEW YORK

Photograph by Michael Kirby Smith, New York Times/Redux

Celebrating 125 Years



The New Age of Exploration

Every month we'll be celebrating the spirit of exploration. Join the adventure.

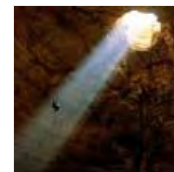


Photo Galleries

Browse through photos of the most memorable moments in National Geographic's 125 years.



Risk Takers

They snare poisonous snakes, drill into glaciers, probe cat parasites—and always push the limits.

Frame What Matters



Current Issue
November 2013
Table of Contents »

NATIONAL GEOGRAPHIC

ngm.com

HOME FEATURES PHOTOGRAPHY INSTAGRAMS PROOF FOUND PHENOMENA YOUR SHOT PUZZLES VIDEO ARCHIVES SUBSCRIBE

Feature Article | Gallery: Why Seas Rise | **Gallery: Damage Done** | Interactive: If All The Ice Melted | Graphic: Superstorm 2100 | Map: Uneven Impacts | Graphic: Rising Seas

The Damage Done

- ADVERTISEMENT -

By the time Sandy struck the Northeast, it had killed 72 people in the Caribbean. It was no longer a hurricane—but it was a thousand miles wide, with 80-mile-an-hour winds that drove the sea onto the coast in lethal surges. The final death toll was 147. As the world warms, it may see more storms like Sandy. It will certainly see higher seas.



Share



BREEZY POINT, QUEENS, NEW YORK

Photograph by JB Nicholas, Splash News/Corbis

Celebrating 125 Years



The New Age of Exploration

Every month we'll be celebrating the spirit of exploration. Join the adventure.

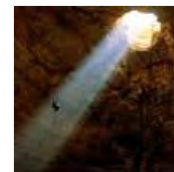


Photo Galleries

Browse through photos of the most memorable moments in National Geographic's 125 years.



Risk Takers

They snare poisonous snakes, drill into glaciers, probe cat parasites—and always push the limits.

Frame What Matters



Current Issue
November 2013
Table of Contents »

NATIONAL GEOGRAPHIC

ngm.com

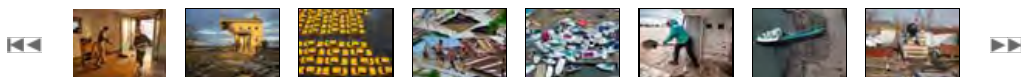
HOME FEATURES PHOTOGRAPHY INSTAGRAMS PROOF FOUND PHENOMENA YOUR SHOT PUZZLES VIDEO ARCHIVES SUBSCRIBE

Feature Article | Gallery: Why Seas Rise | **Gallery: Damage Done** | Interactive: If All The Ice Melted | Graphic: Superstorm 2100 | Map: Uneven Impacts | Graphic: Rising Seas

The Damage Done

- ADVERTISEMENT -

By the time Sandy struck the Northeast, it had killed 72 people in the Caribbean. It was no longer a hurricane—but it was a thousand miles wide, with 80-mile-an-hour winds that drove the sea onto the coast in lethal surges. The final death toll was 147. As the world warms, it may see more storms like Sandy. It will certainly see higher seas.



Share



ROCKAWAY PARK, QUEENS, NEW YORK

Photograph by Ken Cedeno, Corbis

Celebrating 125 Years



The New Age of Exploration

Every month we'll be celebrating the spirit of exploration. Join the adventure.



Photo Galleries

Browse through photos of the most memorable moments in National Geographic's 125 years.



Risk Takers

They snare poisonous snakes, drill into glaciers, probe cat parasites—and always push the limits.

Frame What Matters



Current Issue
November 2013
Table of Contents »

NATIONAL GEOGRAPHIC

ngm.com

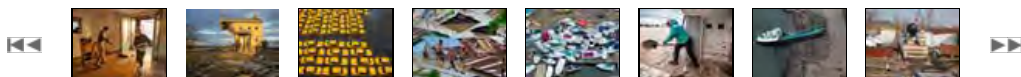
HOME FEATURES PHOTOGRAPHY INSTAGRAMS PROOF FOUND PHENOMENA YOUR SHOT PUZZLES VIDEO ARCHIVES SUBSCRIBE

Feature Article | Gallery: Why Seas Rise | **Gallery: Damage Done** | Interactive: If All The Ice Melted | Graphic: Superstorm 2100 | Map: Uneven Impacts | Graphic: Rising Seas

The Damage Done

- ADVERTISEMENT -

By the time Sandy struck the Northeast, it had killed 72 people in the Caribbean. It was no longer a hurricane—but it was a thousand miles wide, with 80-mile-an-hour winds that drove the sea onto the coast in lethal surges. The final death toll was 147. As the world warms, it may see more storms like Sandy. It will certainly see higher seas.



Share



UNION BEACH, NEW JERSEY

Photograph by Ken Cedeno, Corbis

Celebrating 125 Years



The New Age of Exploration

Every month we'll be celebrating the spirit of exploration. Join the adventure.



Photo Galleries

Browse through photos of the most memorable moments in National Geographic's 125 years.



Risk Takers

They snare poisonous snakes, drill into glaciers, probe cat parasites—and always push the limits.

Frame What Matters



CELEBRATING 125 YEARS »

Connect:



Search

Sign In Join

Home Video Photography Animals Environment Travel Adventure Television Kids **Subscribe** Shop

Daily News The Magazine Maps Science Education Games Events Blogs Movies Explorers Apps Trips



Current Issue
November 2013
Table of Contents »

NATIONAL GEOGRAPHIC

ngm.com

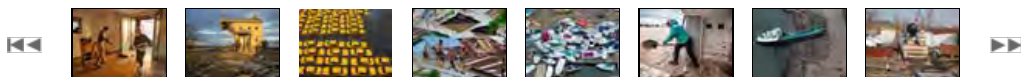
HOME FEATURES PHOTOGRAPHY INSTAGRAMS PROOF FOUND PHENOMENA YOUR SHOT PUZZLES VIDEO ARCHIVES SUBSCRIBE

Feature Article | Gallery: Why Seas Rise | **Gallery: Damage Done** | Interactive: If All The Ice Melted | Graphic: Superstorm 2100 | Map: Uneven Impacts | Graphic: Rising Seas

The Damage Done

- ADVERTISEMENT -

By the time Sandy struck the Northeast, it had killed 72 people in the Caribbean. It was no longer a hurricane—but it was a thousand miles wide, with 80-mile-an-hour winds that drove the sea onto the coast in lethal surges. The final death toll was 147. As the world warms, it may see more storms like Sandy. It will certainly see higher seas.



Share



HOBOKEN, NEW JERSEY

Photograph by Charles Sykes, AP Images

Celebrating 125 Years



The New Age of Exploration

Every month we'll be celebrating the spirit of exploration. Join the adventure.

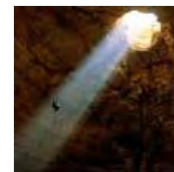


Photo Galleries

Browse through photos of the most memorable moments in National Geographic's 125 years.



Risk Takers

They snare poisonous snakes, drill into glaciers, probe cat parasites—and always push the limits.

Frame What Matters



Current Issue
November 2013
Table of Contents »

NATIONAL GEOGRAPHIC

ngm.com

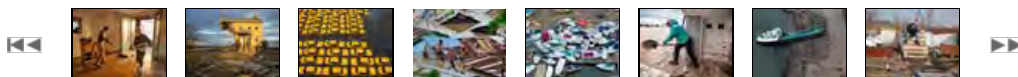
HOME FEATURES PHOTOGRAPHY INSTAGRAMS PROOF FOUND PHENOMENA YOUR SHOT PUZZLES VIDEO ARCHIVES SUBSCRIBE

Feature Article | Gallery: Why Seas Rise | **Gallery: Damage Done** | Interactive: If All The Ice Melted | Graphic: Superstorm 2100 | Map: Uneven Impacts | Graphic: Rising Seas

The Damage Done

- ADVERTISEMENT -

By the time Sandy struck the Northeast, it had killed 72 people in the Caribbean. It was no longer a hurricane—but it was a thousand miles wide, with 80-mile-an-hour winds that drove the sea onto the coast in lethal surges. The final death toll was 147. As the world warms, it may see more storms like Sandy. It will certainly see higher seas.



Share



SABANA PERDIDA, DOMINICAN REPUBLIC

Photograph by Ricardo Rojas, Reuters

Celebrating 125 Years



The New Age of Exploration

Every month we'll be celebrating the spirit of exploration. Join the adventure.



Photo Galleries

Browse through photos of the most memorable moments in National Geographic's 125 years.



Risk Takers

They snare poisonous snakes, drill into glaciers, probe cat parasites—and always push the limits.

Frame What Matters



Current Issue
November 2013
[Table of Contents »](#)

NATIONAL GEOGRAPHIC

ngm.com

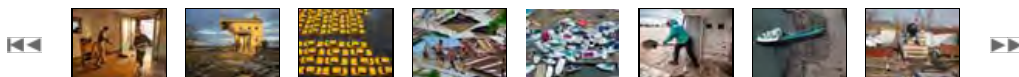
HOME FEATURES PHOTOGRAPHY INSTAGRAMS PROOF FOUND PHENOMENA YOUR SHOT PUZZLES VIDEO ARCHIVES SUBSCRIBE

Feature Article | [Gallery: Why Seas Rise](#) | [Gallery: Damage Done](#) | [Interactive: If All The Ice Melted](#) | [Graphic: Superstorm 2100](#) | [Map: Uneven Impacts](#) | [Graphic: Rising Seas](#)

The Damage Done

- ADVERTISEMENT -

By the time Sandy struck the Northeast, it had killed 72 people in the Caribbean. It was no longer a hurricane—but it was a thousand miles wide, with 80-mile-an-hour winds that drove the sea onto the coast in lethal surges. The final death toll was 147. As the world warms, it may see more storms like Sandy. It will certainly see higher seas.



Share



MANTOLOKING, NEW JERSEY

Photograph by George Steinmetz

Celebrating 125 Years



The New Age of Exploration

Every month we'll be celebrating the spirit of exploration. Join the adventure.

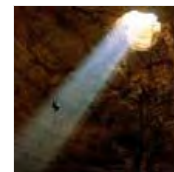


Photo Galleries

Browse through photos of the most memorable moments in National Geographic's 125 years.



Risk Takers

They snare poisonous snakes, drill into glaciers, probe cat parasites—and always push the limits.

Frame What Matters



Current Issue
November 2013
[Table of Contents »](#)

NATIONAL GEOGRAPHIC

ngm.com

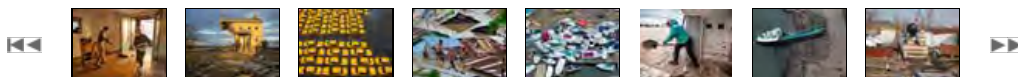
HOME FEATURES PHOTOGRAPHY INSTAGRAMS PROOF FOUND PHENOMENA YOUR SHOT PUZZLES VIDEO ARCHIVES SUBSCRIBE

Feature Article | [Gallery: Why Seas Rise](#) | [Gallery: Damage Done](#) | [Interactive: If All The Ice Melted](#) | [Graphic: Superstorm 2100](#) | [Map: Uneven Impacts](#) | [Graphic: Rising Seas](#)

The Damage Done

- ADVERTISEMENT -

By the time Sandy struck the Northeast, it had killed 72 people in the Caribbean. It was no longer a hurricane—but it was a thousand miles wide, with 80-mile-an-hour winds that drove the sea onto the coast in lethal surges. The final death toll was 147. As the world warms, it may see more storms like Sandy. It will certainly see higher seas.



Share



LONG BEACH, NEW YORK

Photograph by Andrew Burton, Getty Images

Celebrating 125 Years



The New Age of Exploration

Every month we'll be celebrating the spirit of exploration. Join the adventure.

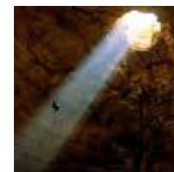


Photo Galleries

Browse through photos of the most memorable moments in National Geographic's 125 years.



Risk Takers

They snare poisonous snakes, drill into glaciers, probe cat parasites—and always push the limits.

Frame What Matters



Current Issue
November 2013
Table of Contents »

NATIONAL GEOGRAPHIC

ngm.com

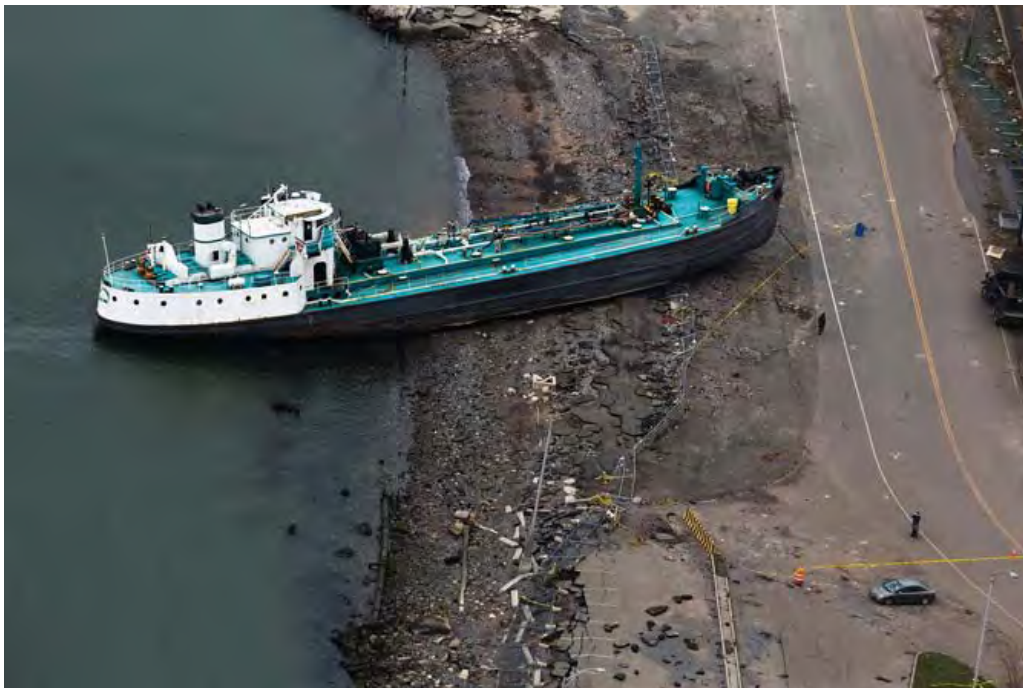
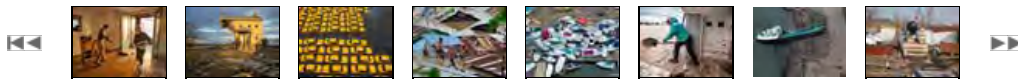
HOME FEATURES PHOTOGRAPHY INSTAGRAMS PROOF FOUND PHENOMENA YOUR SHOT PUZZLES VIDEO ARCHIVES SUBSCRIBE

Feature Article | Gallery: Why Seas Rise | **Gallery: Damage Done** | Interactive: If All The Ice Melted | Graphic: Superstorm 2100 | Map: Uneven Impacts | Graphic: Rising Seas

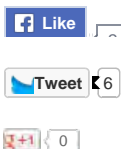
The Damage Done

- ADVERTISEMENT -

By the time Sandy struck the Northeast, it had killed 72 people in the Caribbean. It was no longer a hurricane—but it was a thousand miles wide, with 80-mile-an-hour winds that drove the sea onto the coast in lethal surges. The final death toll was 147. As the world warms, it may see more storms like Sandy. It will certainly see higher seas.



Share



STATEN ISLAND, NEW YORK

Photograph by John Minchillo, AP Images

Celebrating 125 Years



The New Age of Exploration

Every month we'll be celebrating the spirit of exploration. Join the adventure.



Photo Galleries

Browse through photos of the most memorable moments in National Geographic's 125 years.



Risk Takers

They snare poisonous snakes, drill into glaciers, probe cat parasites—and always push the limits.

Frame What Matters



Current Issue
November 2013
Table of Contents »

NATIONAL GEOGRAPHIC

ngm.com

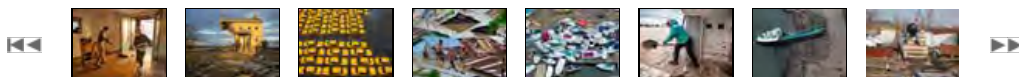
HOME FEATURES PHOTOGRAPHY INSTAGRAMS PROOF FOUND PHENOMENA YOUR SHOT PUZZLES VIDEO ARCHIVES SUBSCRIBE

Feature Article | Gallery: Why Seas Rise | **Gallery: Damage Done** | Interactive: If All The Ice Melted | Graphic: Superstorm 2100 | Map: Uneven Impacts | Graphic: Rising Seas

The Damage Done

- ADVERTISEMENT -

By the time Sandy struck the Northeast, it had killed 72 people in the Caribbean. It was no longer a hurricane—but it was a thousand miles wide, with 80-mile-an-hour winds that drove the sea onto the coast in lethal surges. The final death toll was 147. As the world warms, it may see more storms like Sandy. It will certainly see higher seas.



Share



STATEN ISLAND, NEW YORK

Photograph by Chang W. Lee, New York Times/Redux

Celebrating 125 Years



The New Age of Exploration

Every month we'll be celebrating the spirit of exploration. Join the adventure.

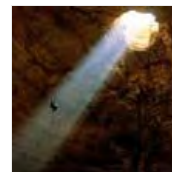


Photo Galleries

Browse through photos of the most memorable moments in National Geographic's 125 years.



Risk Takers

They snare poisonous snakes, drill into glaciers, probe cat parasites—and always push the limits.

Frame What Matters



Current Issue
November 2013
Table of Contents »

NATIONAL GEOGRAPHIC

ngm.com

HOME FEATURES PHOTOGRAPHY INSTAGRAMS PROOF FOUND PHENOMENA YOUR SHOT PUZZLES VIDEO ARCHIVES SUBSCRIBE

Feature Article | Gallery: Why Seas Rise | **Gallery: Damage Done** | Interactive: If All The Ice Melted | Graphic: Superstorm 2100 | Map: Uneven Impacts | Graphic: Rising Seas

The Damage Done

- ADVERTISEMENT -

By the time Sandy struck the Northeast, it had killed 72 people in the Caribbean. It was no longer a hurricane—but it was a thousand miles wide, with 80-mile-an-hour winds that drove the sea onto the coast in lethal surges. The final death toll was 147. As the world warms, it may see more storms like Sandy. It will certainly see higher seas.



Share



Photograph by Mark Thiessen, NGM Staff

An orange line sprayed on this condemned house—and on Robb Braidwood of the Chesapeake, Virginia, Office of Emergency Management—marks the typical flood height in the neighborhood. "It doesn't take a major storm," says Braidwood. "Heavy rain and the right wind during a high tide will do it."

Celebrating 125 Years



The New Age of Exploration

Every month we'll be celebrating the spirit of exploration. Join the adventure.



Photo Galleries

Browse through photos of the most memorable moments in National Geographic's 125 years.



Risk Takers

They snare poisonous snakes, drill into glaciers, probe cat parasites—and always push the limits.

Frame What Matters