

Local Projects to Protect Lake Erie

Cassandra Pinkoski

Grants Specialist, Chautauqua County Soil & Water Conservation
District

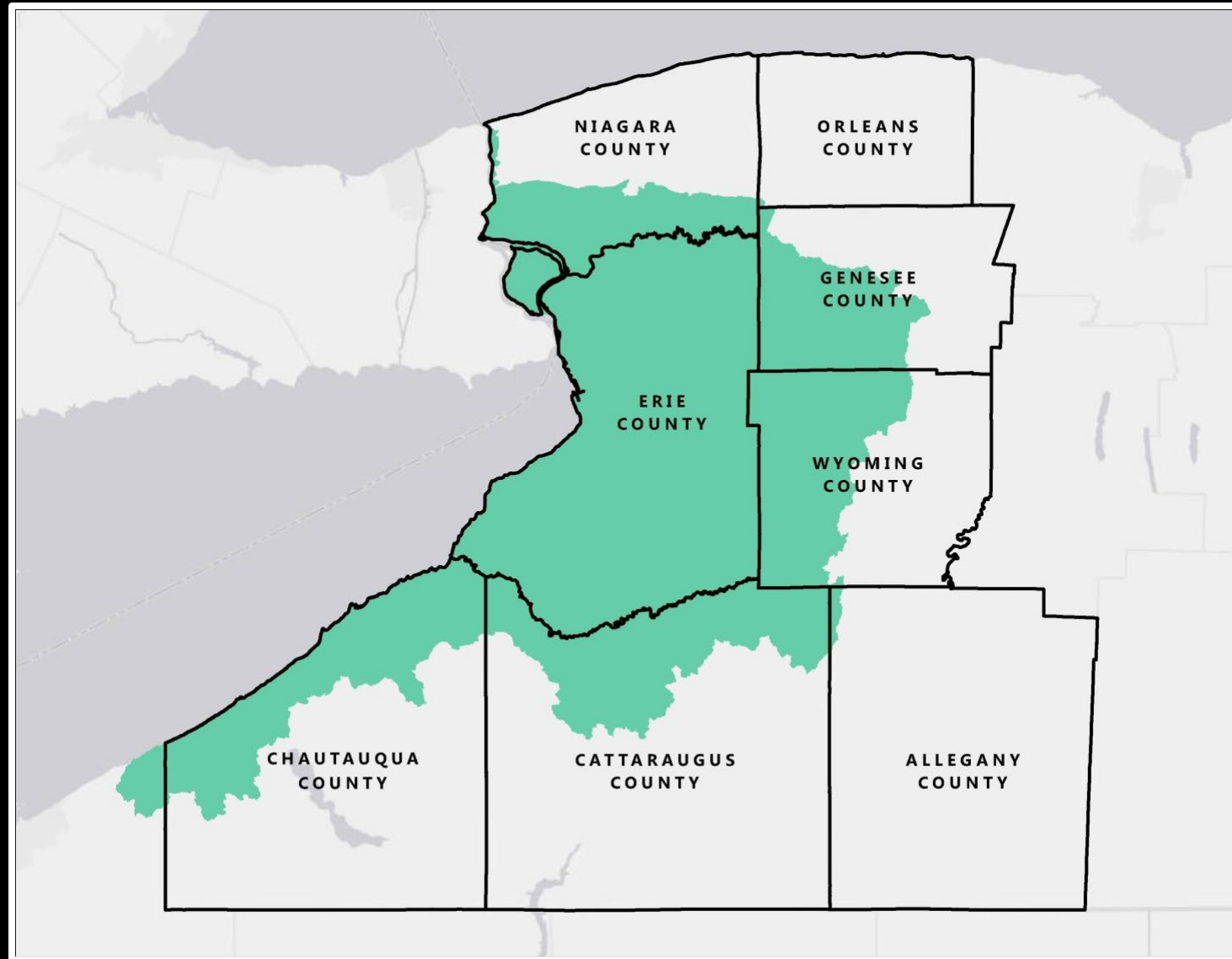
Chair, Lake Erie Watershed Protection Alliance

Chautauqua County Soil and Water Conservation District

- Established throughout the United States in response to the Dust Bowl of the 1930's
- Have the technical ability and enabling legislation to address water quality concerns throughout the county
- A leading strength of the Districts is their flexibility in with whom they can work—unlike other governmental agencies, Districts have a long history working with private landowners



Where do you live?



Lake Erie Watershed Protection Alliance

- Chautauqua, Cattaraugus, Erie counties
- Water Resource Board:
 - 3 representatives from each county
 - Local representative
 - Regional representative
 - Soil & Water Conservation District representative
- Canadian, Tribal, State, Regional, Local, and Non-Profit, and Business partnerships
- Funding through Environmental Protection Fund since 2015



What LEWPA Does

- Education
 - Identify funding opportunities for municipalities
 - Training
 - Public outreach
 - Advisories
- Implementation
 - Surveys
 - Planning
 - Coordinating partnerships
 - On-the-ground projects
 - Monitoring



Ecosystem-Based Management

- SUNY ESF - Ecosystem-based management is an integrated organizational approach to decision making that considers an entire ecological community, including humans to create a sound blueprint for the near and long-term ecological health and development.
- NYS Ag & Markets - Ecosystem Based Management uses a place-based approach to natural resource conservation. This approach focuses on the complex issues threatening our environment in a single location, rather than resolving a single issue statewide. It works by coordinating local, state, and federal programs and providing funding in targeted areas to fill in the gaps, making it easier for landowners and conservation agencies to get conservation off the ground and to achieve meaningful results.
- US EPA - EBM emphasizes on factoring in complex linkages in social-ecological systems; dealing with adequate scales (both time and space wise); promoting adaptive management of complex and dynamic systems; and adopting integrated assessment and management frameworks. It assigns economic and non-economic value to our biodiversity (Ecosystem Services) through environmental and ecological economics, highlighting the fundamental philosophical principles underlining both approaches.

Hyde Creek Stormwater Management

Wright Park Blvd Culvert



















Hyde Creek Stormwater Management

Wright Park Floodplain

















NO
DUMPING
ALLOWED
\$250 FINE









Hyde Creek Stormwater Management

Hyde Creek Outlet

















Wright Park Bluff

Drainage





























Goose Creek Culvert

Before













Goose Creek Culvert

After















Main Street Beach Stormwater





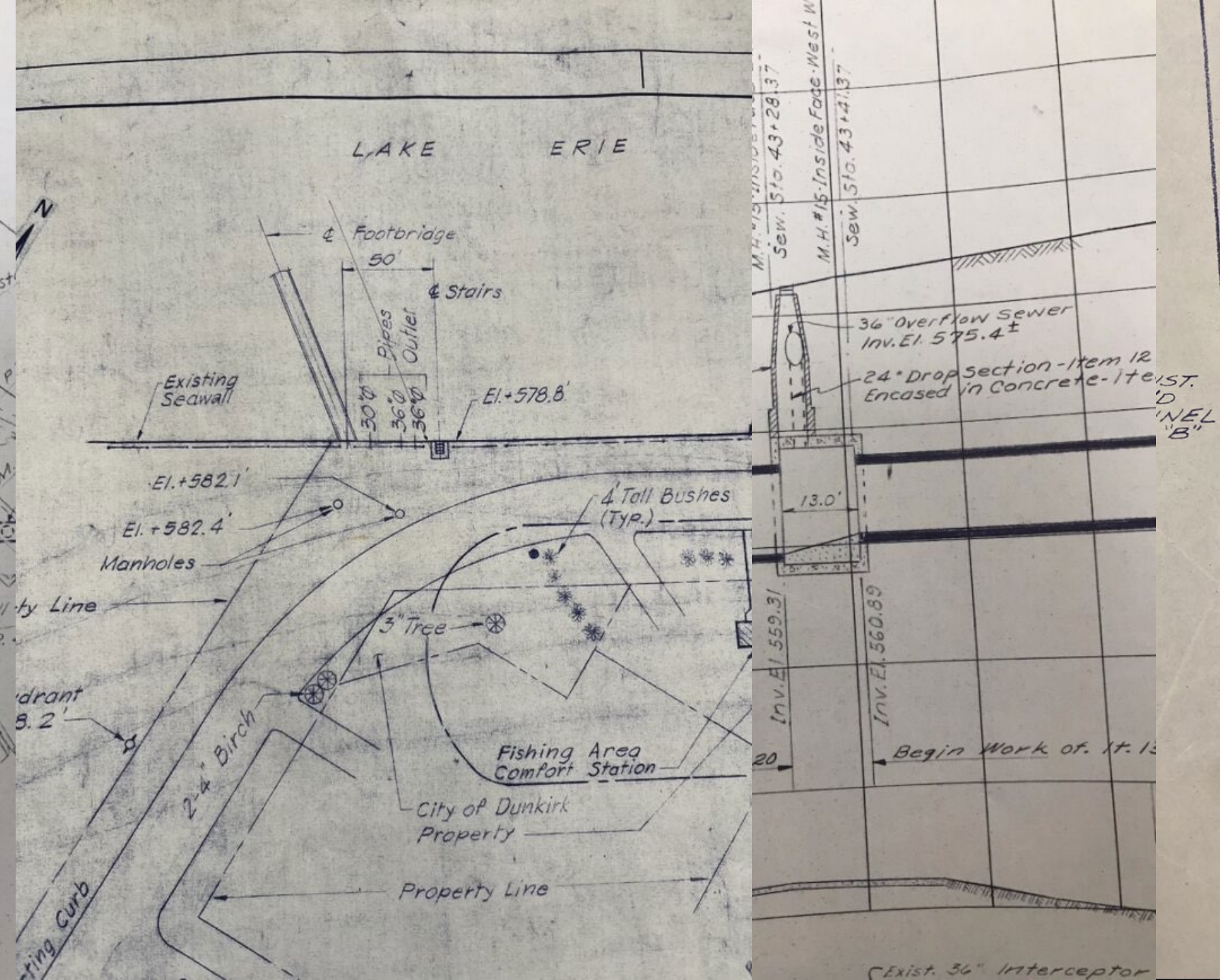
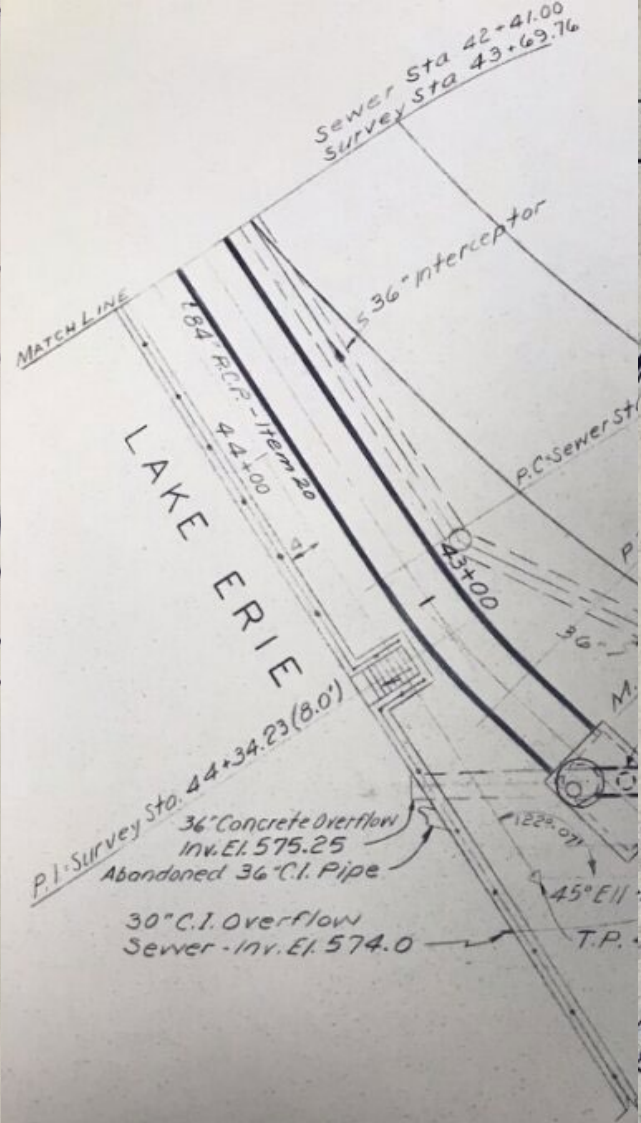




Engineered Harbor Wetland











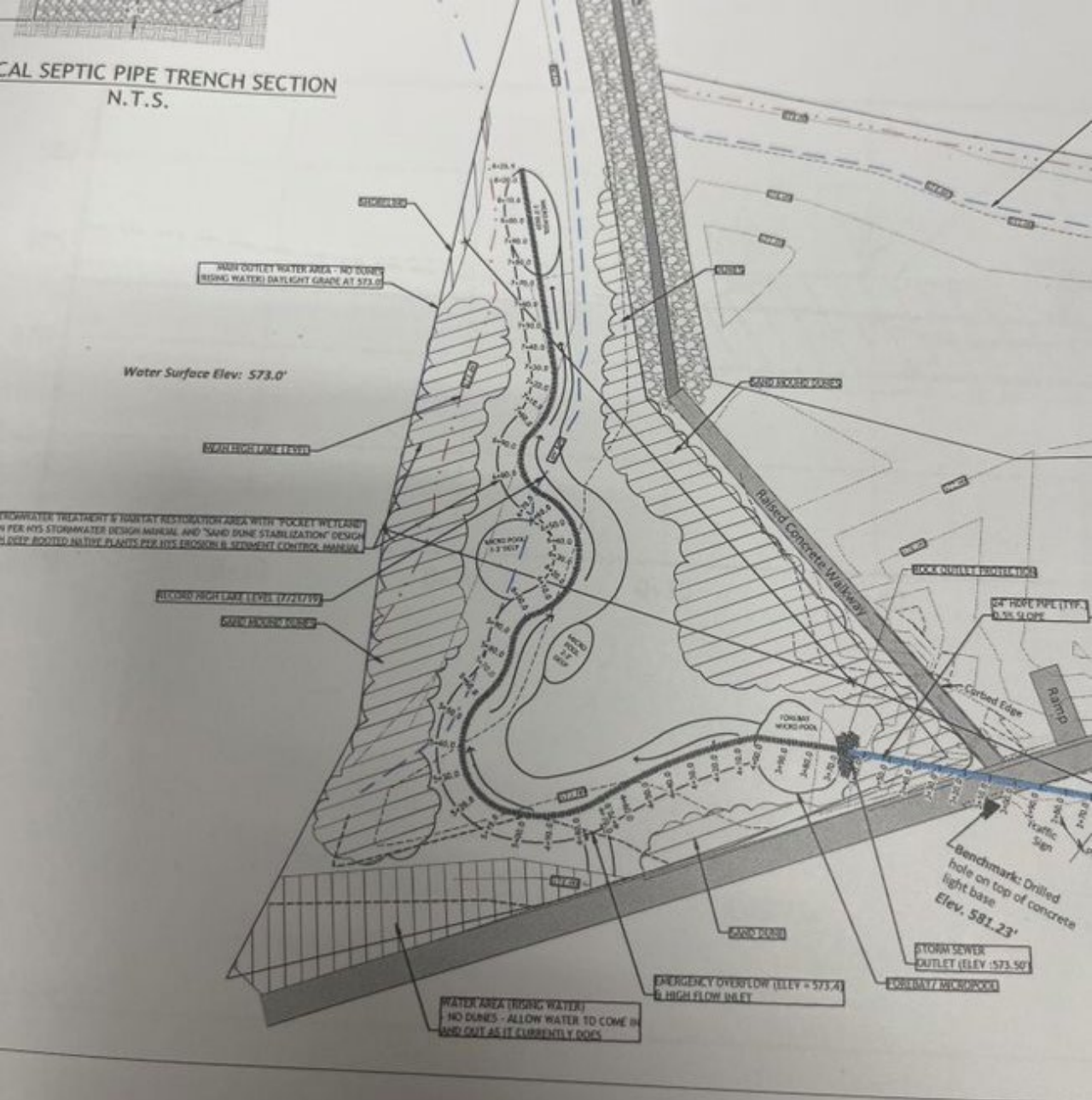
Nature-Based Solutions

- Nature-based Solutions leverage nature and the power of healthy ecosystems to protect people, optimize infrastructure and safeguard a stable and biodiverse future. - IUCN (International Union for Conservation of Nature)
- Broadly, nature-based solutions are actions to protect, conserve, restore, and sustainably use and manage ecosystems in a way that addresses social, economic and environmental challenges while simultaneously benefiting human well-being and biodiversity. In other words, they are interventions that use nature and the natural functions of healthy ecosystems to tackle some of the most pressing challenges of our time. – World Resources Institute

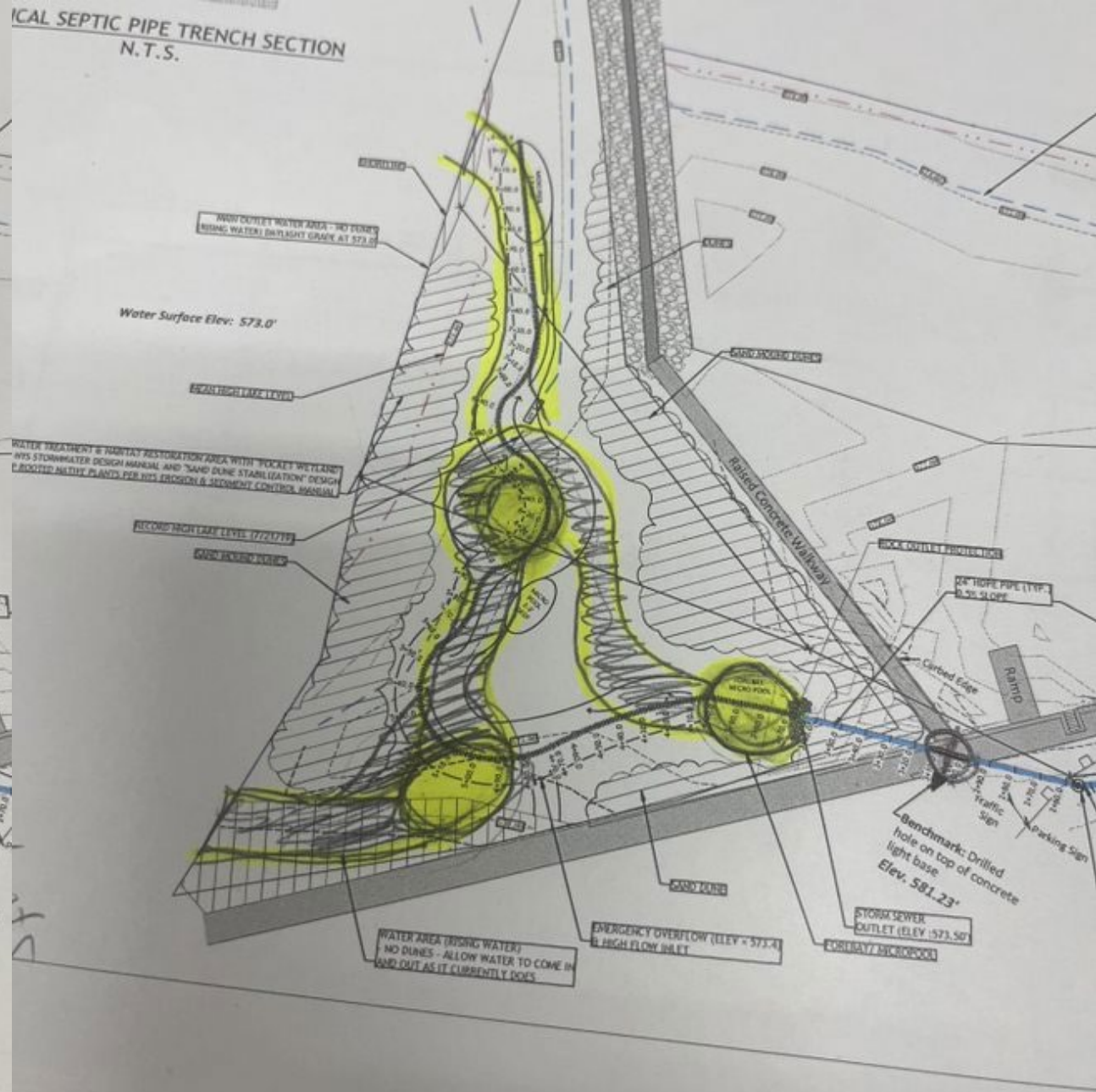




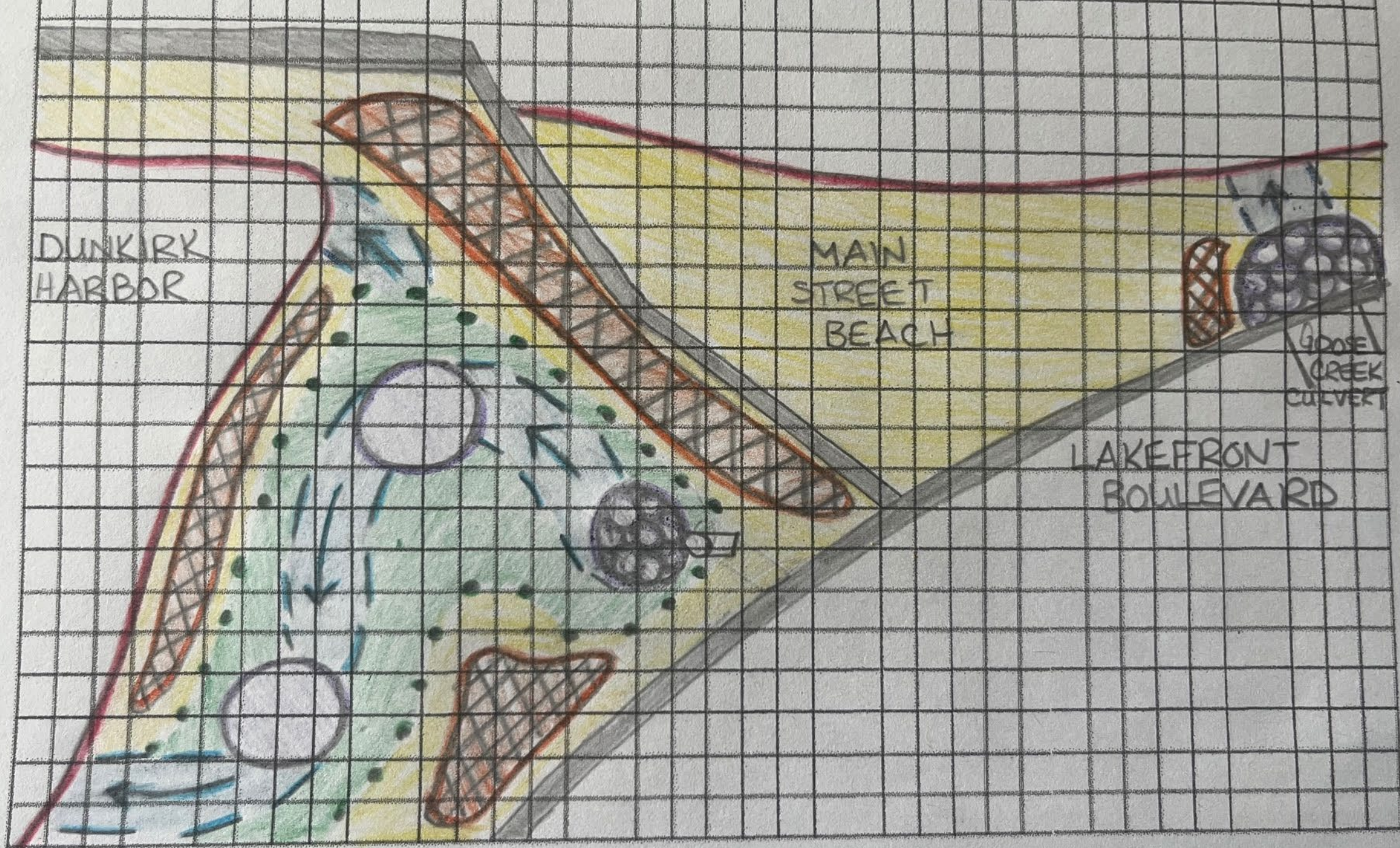
CAL SEPTIC PIPE TRENCH SECTION N.T.S.



CAL SEPTIC PIPE TRENCH SECTION N.T.S.



3/9/2023





















Lake Erie Shoreline

Bart's Cove Marina





















Lake Erie Shoreline

Narraway Property

















Questions?