

Track A: Understanding and Managing Floodplains for Healthy Watersheds and Resilient Communities

Clean Water and Climate Vulnerability

**Fall 2022 – Local Government Workshop
del Lago Resort & Casino**

Jayme Breschard, AICP, CFM, Senior Managing Community Planner–Climate Action Specialist

Thursday, November 3, 2022

Agenda

- 01** Clean Water
- 02** Clean Water Plans
- 03** History of Drinking Water
- 04** Case Studies
- 05** Conclusion and Next Steps

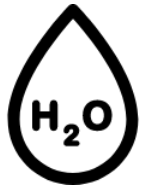


Clean Water



1. Fishing

2. Primate Contact Recreation (Swimming)



3. Secondary Contact Recreation (Boating)

4. Source of Water Supply

5. Aquatic Life

6. Habitat/Hydrology

7. Aesthetics



Department of
Environmental
Conservation

CONSOLIDATED ASSESSMENT AND LISTING METHODOLOGY

May 2021



www.dec.ny.gov

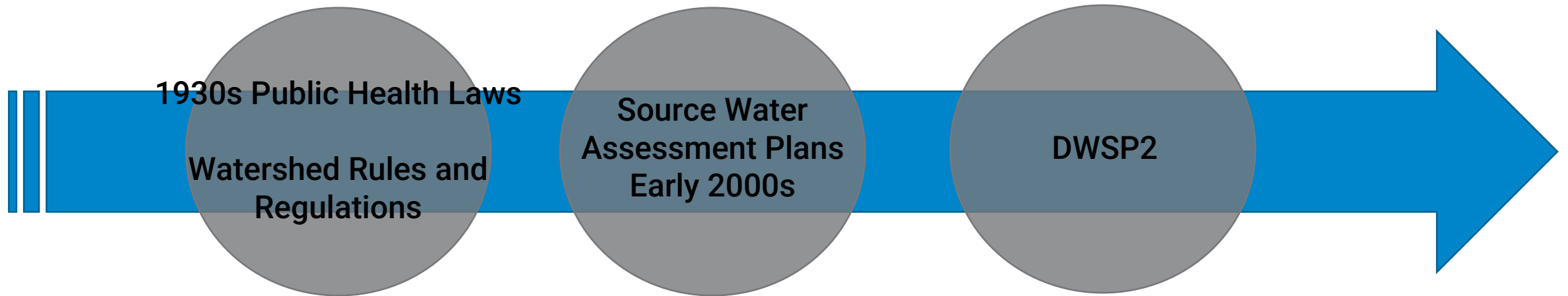
Clean Water Plans

- **Total Maximum Daily Load (TMDL)**
- **Nine Element (9E) Watershed Plans**
- **Drinking Water Source Protection Program Plan (DWSP2 Plan)**

DWSP2 Framework's Key Components

1. Stakeholder Group
 - 1.1 Form a Stakeholder Group
 - 1.2 Establish Goals and Formulate a Vision
2. Drinking Water Source Assessment
 - 2.1 Develop an Overview of the Water System
 - 2.2 Prepare a Drinking Water Source Protection Map
 - 2.3 Create a Potential Contaminant Source Inventory
3. Protection and Implementation Strategies
 - 3.1 Identify Protection and Management Methods
 - 3.2 Develop an Implementation Timeline
4. Progression and Maintenance
 - 4.1 Designate a Plan Management Team

History of Drinking Water



Case Studies

City of Ithaca, Tompkins County

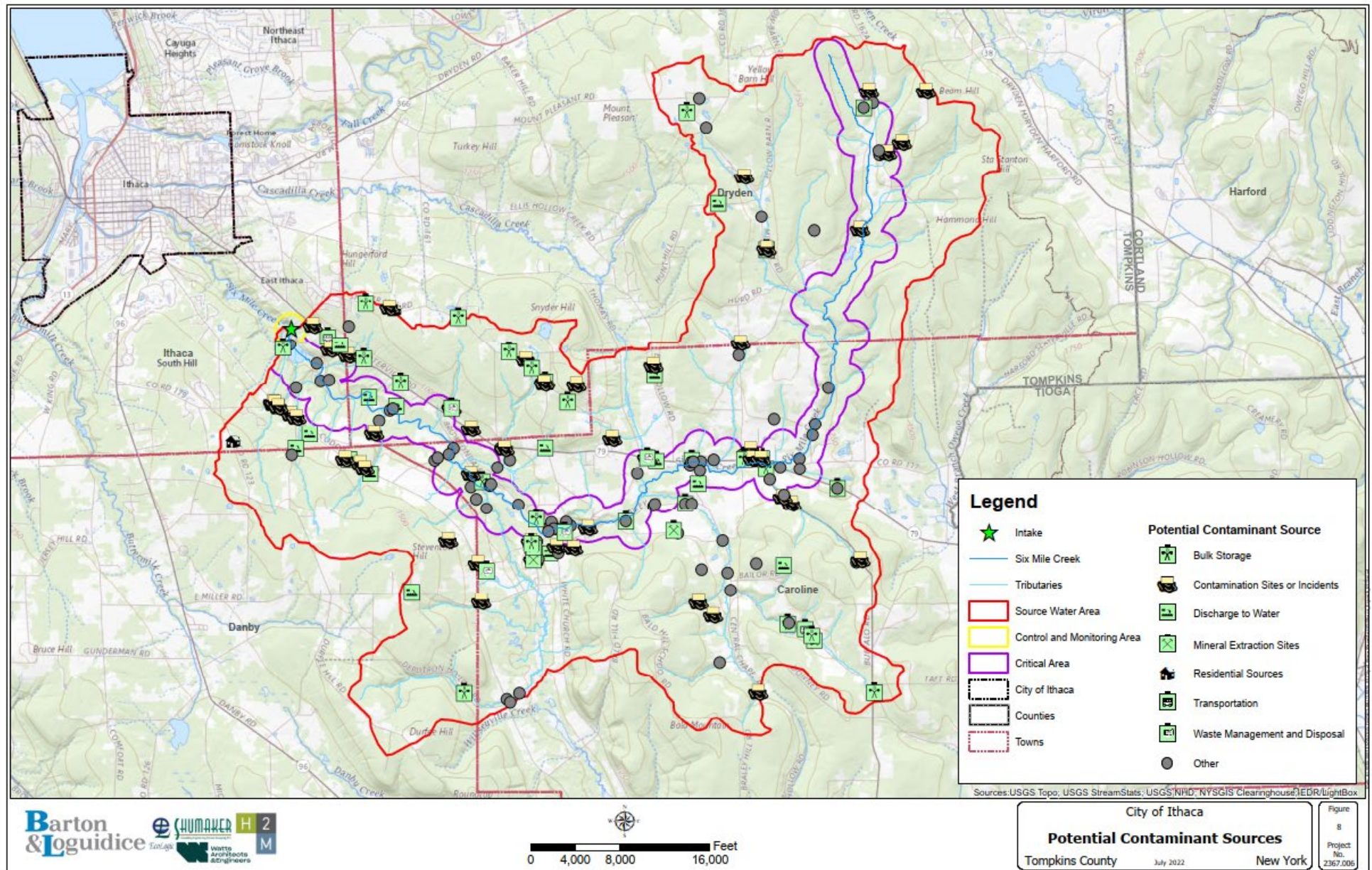
Village of Arcade, Wyoming County

Project Profiles - Building Climate Resilience: Flooding and Impervious Surfaces

- Intense and/or frequent climatic events inundate floodprone areas which can bring contaminants into the water source
- Increase of contaminated water could lead to higher treatment costs and pose a threat to public health



**Critical and Source Water Areas
intersect with neighboring
communities with
various land use controls**



Next Steps

Land Use Tools and Methods

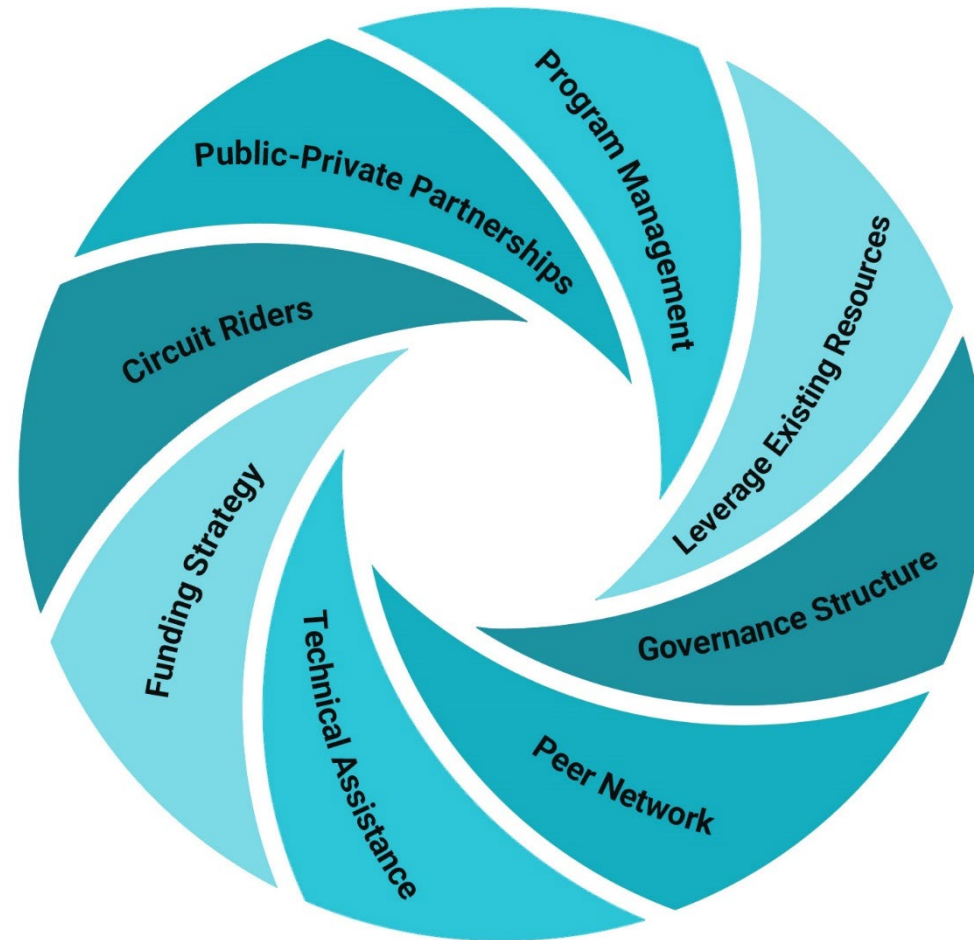
Regulatory

- Municipal Comprehensive Plan
- Zoning Ordinances
- Special Use Permits
- Site Plan Reviews
- Subdivision Control
- Critical Environmental Area (CEA)
- Intermunicipal Agreements

Model Local Laws to Increase Resilience, Green Infrastructure, Intermunicipal Agreements

Ideas for Clean Water Resilience

- Land Use – Regulatory and Non-Regulatory Actions
- Regional Perspective – Identify Interests, Needs, and Resources
- Identify, Establish, and Sustain Partnerships



Questions and Discussion

Jayme Breschard
Office: 585.325.7190
Email: jbreschard@bartonandloguidice.com