

Coastlines



NEW YORK STATE SEA GRANT PROGRAM

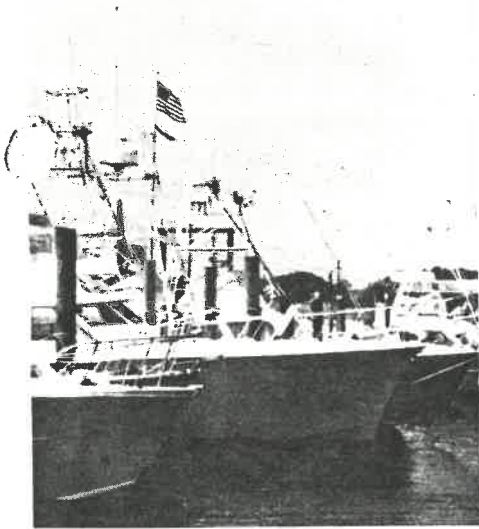
STATE UNIVERSITY OF NEW YORK and CORNELL UNIVERSITY

Vol. 4 No. 1

July-August 1973

MARINA SURVEY NEARS COMPLETION

The most extensive study of marinas in New York State is nearing completion having received assistance from nearly 200 firms. There are over 1500 marinas in the state and Sea Grant researchers visited one-fourth of those providing public berthing.



The study will permit better indication of the economic contribution the industry makes to local communities; have better information on which to make business management decisions; help governmental units establish appropriate pricing and development decisions. The study is partially supported by the New York State Office of Parks and Recreation and reflects their interest in melding state and private recreation services.

Detailed findings of this study are expected to be available in published form in late fall and will be covered in COASTLINES when available.

COASTLINES SHIFTS EMPHASIS

This is COASTLINES, a regular publication of New York's Sea Grant Program. This issue is the first to be directed to specific coastal audiences including commercial fishermen, marina operators, planning boards, environmental management

councils and educators. Thus although published for two years, this is the first issue of COASTLINES to be seen by hundreds of New Yorkers.

The university community and agency personnel will continue to receive COASTLINES but it will now focus on articles and information of use in solving coastal problems. To serve you best, COASTLINES needs your input. What type of information would be of maximum benefit to you?

You can give us your view by writing directly to "Editor," Sea Grant, Fernow Hall, Ithaca, New York 14850 or contact one of the Sea Grant Advisory Service offices listed on the back of each issue of COASTLINES.

If you're buying a PFD, examine it closely to insure the product bears a Coast Guard approval label. If a recreational boater, you will most commonly buy type I (life preservers) or type II (buoyant vests) to meet the federal standards. The special purpose (type III) wearable PFD is not generally used on pleasure craft.

LIFE PRESERVER REQUIREMENTS

Ring buoys and buoyant cushions alone will no longer be able to meet Coast Guard safety requirements for boats 16 feet or longer (unless your's is a canoe or kayak).

EFFECTIVE 1 OCTOBER 1973 all craft must comply with the new rules.

All 16 feet or longer boats (except canoes and kayaks) must have a coast guard approved *wearable* PFD (of types I, II, or III) on board for each person PLUS one additional type IV device (buoyant cushion or ring buoy) to be used as a throwable flotation device.

Boats less than 16 feet (and all canoes and kayaks) must now carry at least one PFD (of types I, II, III, or IV) for each person on board. Ring buoys and buoyant cushions are acceptable PFD's on these craft.

The changes result from the finding that many fatalities could have been prevented by adequate flotation gear. The requirement for the throwable (type IV) device on craft longer than 16 feet is intended to provide rapid aid to persons falling overboard. Buoyant cushions continue to be approved on smaller vessels (less than 16 feet) because of limited storage space. Although not required, it would be far better for you to carry wearable PFD's in place of or in addition to type IV devices on even your smaller boat.

BOATS less than 16 feet
(Plus canoes and kayaks)

Required to carry:

One (1) Personal Flotation Device of Types I, II, III, or IV for each person on board.

BOATS 16 feet or longer
(Except canoes and kayaks)

Required to carry:

One (1) *Wearable* Personal Flotation Device of Types I, II, or III for each person on board.

PLUS

One (1) *Throwable* Type IV PFD
-i.e. ring buoy or buoyant cushion.

LEGISLATIVE- SEA GRANT INTERNSHIPS

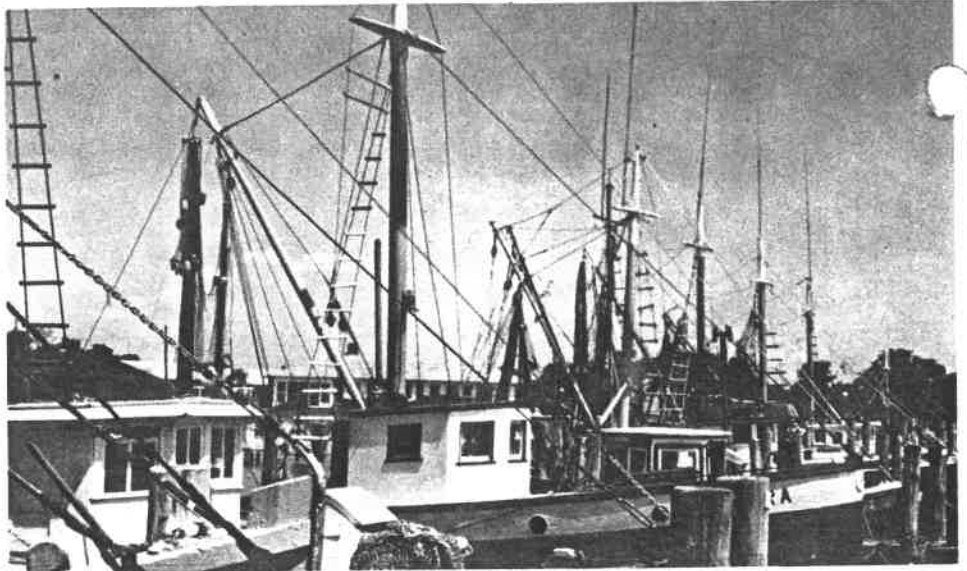
The Assembly Scientific Staff of the New York State Legislature and the New York State Sea Grant Program are offering four LEGISLATIVE INTERNSHIPS for graduate students in the 1973-74 academic year. These cooperative internships, will enable graduate students at State University of New York or Cornell campuses to work under the guidance of an on-campus professor and the Assembly Scientific Staff, on problems of interest to the Sea Grant Program and the New York State Legislature.

The internships provide a research assistantship of \$4,100 for half-time work during the 1973-74 academic year, and full-time work for the summer of 1974. Modest support funds are also made available. Applicants must be full-time graduate students at a campus of the State University of New York or Cornell University and associated with their degree program.

A list of topics of particular interest to the co-sponsors may be obtained from the New York State Sea Grant Program office, 99 Washington Avenue, Albany, New York 12210.

EROSION CONTROL FOR HOMEOWNERS

Homeowners on Lake Ontario and Erie can be aided in deciding on temporary erosion control measures through a new Corps of Engineer publication. "Help Yourself" describes alternatives and decisions shoreline owners should make before investing in any control effort. Engineering design features, materials and costs are all discussed in this pamphlet. "Help Yourself" is available free of charge from the U.S. Army Engineer District, 1776 Niagara Street, Buffalo, New York 14207, or by checking the appropriate space on the next page of this issue of COASTLINES.



HULLS EXEMPT COMMERCIAL TAX

New York commercial fishermen can become exempt from paying sales taxes on certain property used in their business operation. Several fishermen faced with a sales tax on a purchased vessel have sought assistance in clarifying this question. If you do not have a sales exemption identification number, request the appropriate forms from:

Mr. Ciosek
New York State Sales Tax Bureau
114 Old Country Road
Mineola, New York 17501

When making requests to the tax office, you should ask for Form ST-105 (Certification of Authority), Form ST-115 (Business Description Sheet), and copies of Form ST-121 (Exempt Use Certificates). Form ST-105 (Certificate of Authority) should be filled out and submitted to the tax office. The fishermen will then be assigned an identification number to use on the exempt use certificates.

Although exempt from paying the sales tax on certain property used in their business operation, fishermen are still required to submit quarterly sales tax returns. Where no tax was paid for that quarter, zeros should be entered in the appropriate column.

PETROLEUM EXPLORATION

Interest in the impact of any possible petroleum exploration and development off of Long Island's coast has prompted several recent developments. A recent meeting sponsored by the Great South Bay Farmers' Cooperative dealt with this topic. Nearly 75 persons heard Mr. Jim Prutney, an oil representative from Louisiana and Delphi University geology professor, Dr. Anthony Cok discuss this topic. Mrs. Claire Stern of the Long Island Environmental Council served as moderator. Those not able to attend that meeting and interested in the topic may find of value the publication "Petroleum Exploration Offshore from New York," an April publication of the New York State Museum and Science Service. This publication is available for 75 cents as described on the next page.

Natural gas wells located in Ontario's waters of Lake Erie produced an estimated 6,247.3 million cubic feet in 1972, a record annual output and slightly over half of last year's total for the province. Some 208 wells contributed to the offshore production, according to information provided by the Ontario Ministry of Natural Resources. New York law prohibits such exploitation.

In 1972, the per capita consumption of fishery products was 12.2 pounds per season, tying the 45 year old record set in 1927.

WETLANDS INVENTORY

With support from the New York State Department of Environmental Conservation, Dr. Ernest Hardy and Maynard Vance, of Cornell's Department of Natural Resources, are performing an inventory of New York State wetlands. The primary source of data is aerial photography, and the goals are to identify and classify wetlands, providing estimates of both the wetlands' potential for management as well as their vulnerability to destruction or degradation through residential or other forms of development.

The statewide inventory is an outgrowth of a recently completed pilot study which focused on wetlands in Oswego County. The methodology developed and tested in this study included both the photo interpretation techniques, using spring and summer panchromatic aerial photographs at scales of 1:24,000 and 1:20,000, and the procedures for obtaining ground verification. Oswego wetlands were classified according to nine cover types, ranging from submerged vegetation to flooded woodland. The area and perimeter of each wetland were determined, after transferring the information from the photos to overlays on U.S.G.S. 7½-minute topographic sheets, and the development potential was estimated by comparing the extent of spring versus summer flooding. In certain cases, beaver dam sites were evaluated to determine the consequences of damming.

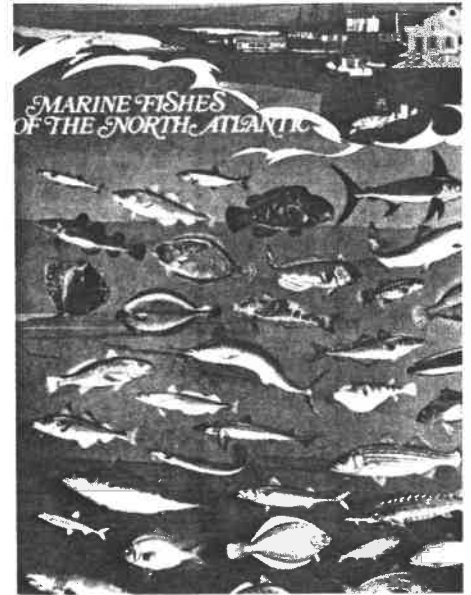
The statewide inventory was initiated in January 1973 and will be completed in approximately one year. Further details can be obtained from:

Dr. Hardy or Mr. Vance
122E Fernow Hall
Cornell University
Ithaca, New York 14850

MARINE FISH CHARTS AVAILABLE

A full-color chart showing forty-two selected marine fishes of the North Atlantic is available from the U.S. Superintendent of Documents, Government Printing Office, Washington, D.C. 20402, for \$1.50. The chart is the first in a series of six. Two others are available at this time as well: marine fish of the North Pacific, and marine fish of the California-Hawaii area. Others planned will show marine fish of the Gulf and South Atlantic, freshwater fish, and shellfish.

Designed for framing, the chart measures 30 by 48 inches, and is ideal for display. Some of the most important commercial species such as cod and haddock, as well as the more outstanding game fishes are shown.



I WANT MORE

Further details to help solve several coastal problems are available. Each month we will try to list several publications of possible interest to you, check off those you would like and return to:

Bruce T. Wilkins
Program Director
Sea Grant Advisory Service
Fernow Hall
Ithaca, N.Y. 14850

- _____ J1 – New York's Sea Grant Program and You. 6 pages
- _____ J2 – The Sea Grant Program in New York State. 61 pages
- _____ J3 – Incorporating a Fishing Business. 8 pages
- _____ J4 – SCUBA Air Supply Shops on Long Island. 4 pages
- _____ J5 – In Productive Harmony – Environmental Impact Statements. 13
– pages
- _____ J6 – Federal Flood Insurance. 21 pages
- _____ J7 – Help Yourself: Erosion Control on Great Lakes. Pamphlet
- _____ J8 – University Curricula in the Marine Sciences and Related Fields.
– 165 pages

There is a charge for the following publications. Make check payable to "Cornell University."

- _____ C1 – Managing our Coastal Zone – Proceedings of New York Conference. 78 pages. \$2.00.
- _____ C2 – Petroleum Exploration Offshore From New York. 25 pages. \$.75.

UPDATE

ALLBEE TO GREAT LAKES

Roger Allbee, Regional Marine Specialist on Long Island is moving to the SUNY-Brockport office at the end of August. Roger's efforts over the past year on Long Island have included work on economic questions of commercial fishermen, marina firms, food processors and planning groups.

On the Great Lakes Mr. Allbee will expand Sea Grant's Advisory Service educational efforts to include economic aspects of recreation firms, assist local firms and governments planning wetland retention and development and explore Sea Grant's role in assisting communities reach decisions on port development.

BAKER MANS OSWEGO

Mr. Dale Baker, Marine Extension Specialist, opened the Oswego Sea Grant Advisory Service office in May on the campus of SUNY-Oswego. Mr. Baker has begun development of educational programs in Environmental Impact Statements and power plant siting. Both issues have been of keen interest to New York businesses and communities for several years. It is hoped Sea Grant's Advisory Service can begin to help clarify and explain important aspects of both of these programs.

Mr. Baker received his B.S. from the New York State College of Environmental Sciences and Forestry, and his M.S. from Cornell University in Environmental Engineering. He served two years with the Peace Corps in Malaysia. Mr. Baker's office phone is: 315-341-3042.

A new bottom trawl of potential value to New York commercial fishermen has received high praise in Rhode Island. If you are the captain of a 350 to 500 horsepower trawler and are interested in helping try this net for its potential value to New York fishermen, you should contact William Walters of the Sea Grant Advisory Services Long Island Office at Stony Brook. (516-246-7777).

Above-normal precipitation in the Great Lakes basin during five of the past six years (1967-72) has brought to the overall area an average of over a foot (13.25 inches) more water than would have resulted from average annual precipitation of 31.56 inches during this period. Precipitation over the Lake Ontario basin was at an all-time high last year (43.67 ins.).

New chart editions are available from authorized National Ocean Survey sales agents for Western Long Island Sound, Shinnecock Bay to East Rockaway Inlet. Issued December 1972 the charts cancel former editions.

NYS Sea Grant Program Office
State University at Albany
99 Washington Avenue
Albany, N.Y. 12210
Tel. (518) 474-5787

Sea Grant Advisory Service
Fernow Hall
Cornell University
Ithaca, N.Y. 14850
Tel. (607) 256-2162

Sea Grant Advisory Service
251 Hartwell Hall
SUNY/Brockport
Brockport, N.Y. 14420
Tel. (716) 395-2638

Sea Grant Advisory Service
Marine Sciences Research Center
SUNY/Stony Brook
Stony Brook, N.Y. 11790
Tel. (516) 246-7777

Sea Grant Advisory Service
SUNY/Oswego
Oswego, N.Y. 13126
Tel. (315) 341-3042

COASTLINES, published bi-monthly, is available free of charge on written request to the editor.



SEA GRANT

Fernow Hall
Cornell University
Ithaca, New York 14850
Tel: (607) 256-2162

