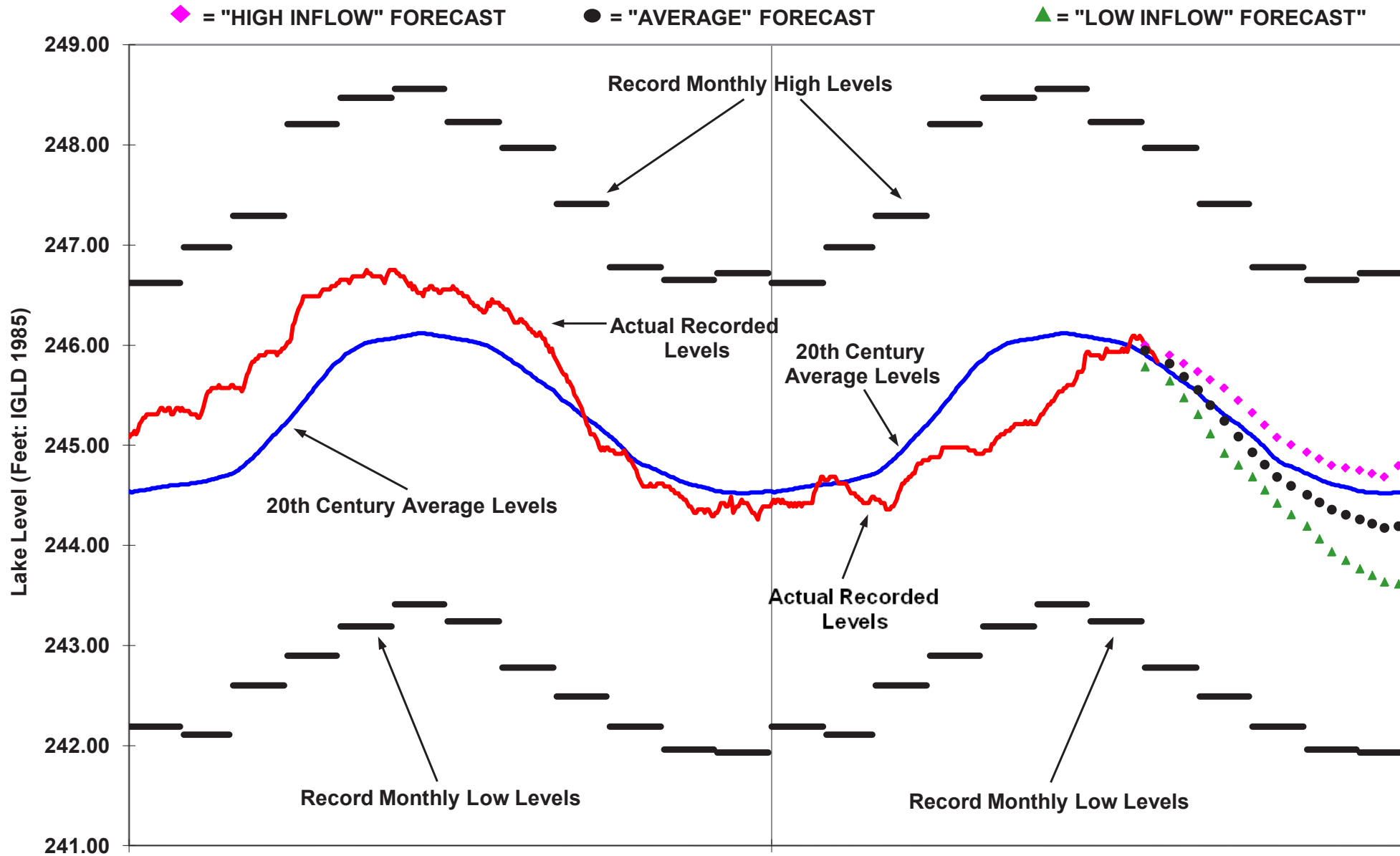




New York Sea Grant  
 SUNY College at  
 Brockport  
 Brockport, NY 14420  
 Tel: (585) 395-2638  
 Fax: (585) 395-2466

New York's Sea Grant  
 Extension Program  
 provides Equal Program  
 and Equal Employment  
 Opportunities in associa-  
 tion with Cornell Coop-  
 erative Extension, U.S.  
 Department of Agriculture  
 and U.S. Department of  
 Commerce, and cooperat-  
 ing County Cooperative  
 Extension Associations.

## Lake Ontario Water Levels 2009 - 2010 (as of 9 August 2010)



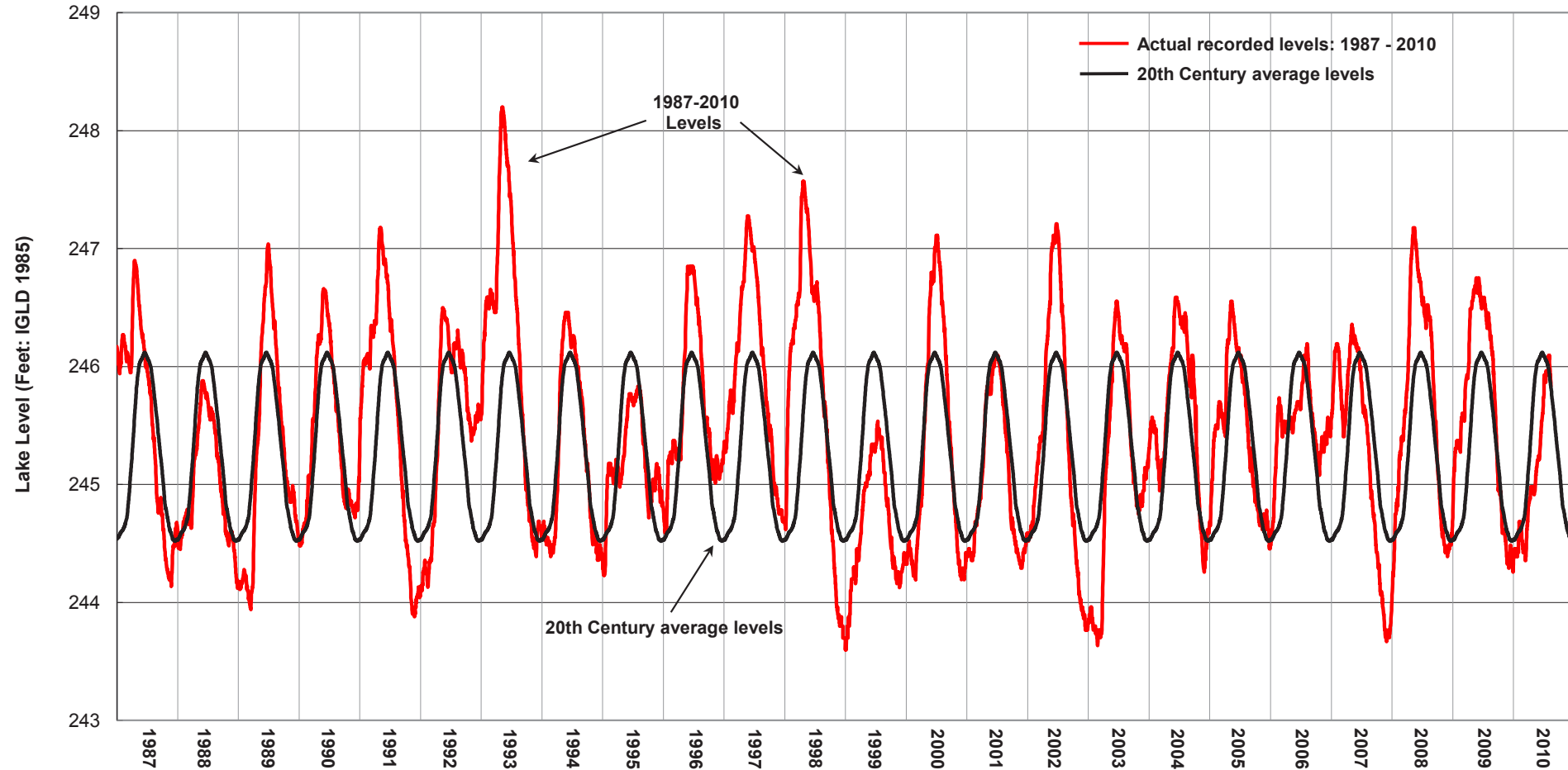
Compiled 10 August 2010 with data from:  
 U.S. Army Corps of Engineers  
 National Oceanic and Atmospheric Administration  
 International St. Lawrence River Board of Control

[Note: recorded daily water levels as shown in red are based on *provisional* weekly reports from the International St. Lawrence River Board of Control. These levels may be marginally higher or lower than final computed levels available from the Board of Control]



New York Sea Grant  
SUNY College at  
Brockport  
Brockport, NY 14420  
Tel: (585) 395-2638  
Fax: (585) 395-2466

## Lake Ontario Long-term Water Levels 1987 - 2010



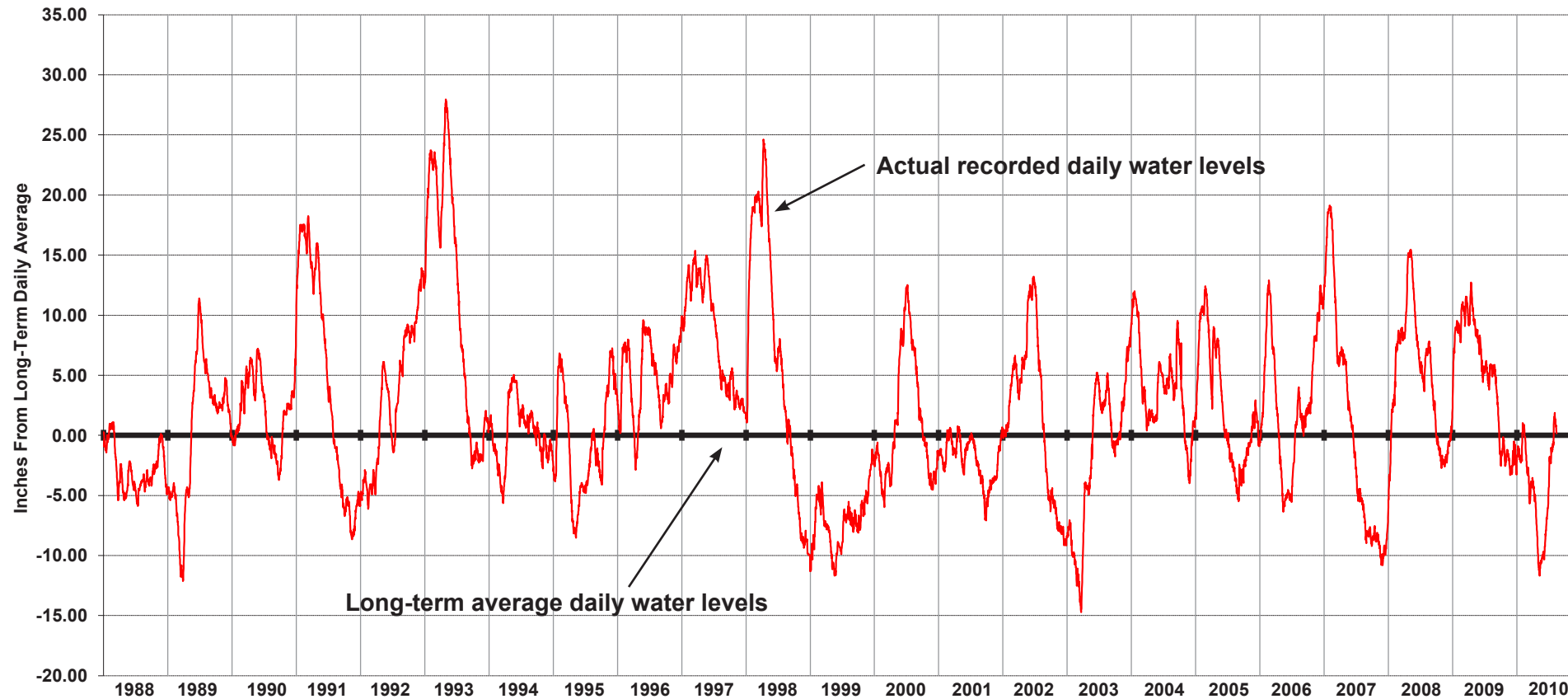
New York's Sea Grant Extension Program provides Equal Program and Equal Employment Opportunities in association with Cornell Cooperative Extension, U.S. Department of Agriculture and U.S. Department of Commerce, and cooperating County Cooperative Extension Associations.

[Note: recorded daily water levels as shown in red are based on *provisional* weekly reports from the International St. Lawrence River Board of Control. These levels may be marginally higher or lower than final computed levels available from the Board of Control]



New York Sea Grant  
SUNY College at  
Brockport  
Brockport, NY 14420  
Tel: (585) 395-2638  
Fax: (585) 395-2466

## Lake Ontario Daily Deviations from Long-term Daily Average Levels 1988 - 2010



08092010

### **Explanation:**

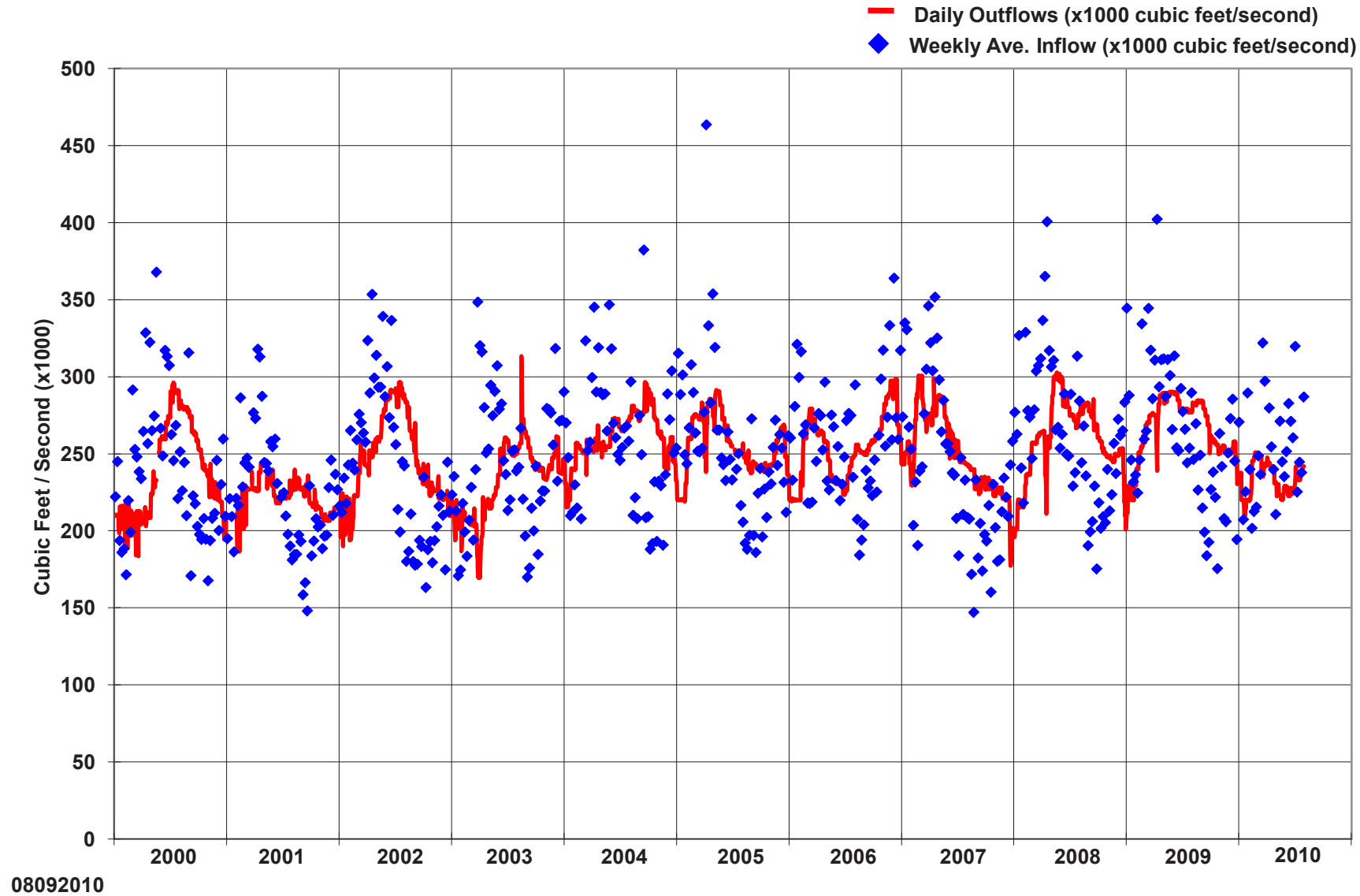
The long-term average water level for any given day is represented as a bold black point on a 0.00 inch baseline. In other words, because the deviation from the long-term average for each of the 8160 days on the baseline is by definition 0.00 inches, the 22 1/3 year period of daily baseline points plot as a single bold black straight line. The deviation of the actual measured water level for every day from January 1, 1989 through May 11, 2010, in inches above or below the long-term average for that day, is represented as a red point; those 8160 individual red points display as the jagged red curve. The difference, above or below the long-term average water level for any given day is the difference, plus (above) or minus (below), between the black long-term baseline (bold black line) and the actual measured daily level (jagged red curve). [Note: recorded daily water levels as shown in red are based on *provisional* weekly reports from the International St. Lawrence River Board of Control. These levels may be marginally higher or lower than final computed levels available from the Board of Control]

New York's Sea Grant Extension Program provides Equal Program and Equal Employment Opportunities in association with Cornell Cooperative Extension, U.S. Department of Agriculture and U.S. Department of Commerce, and cooperating County Cooperative Extension Associations.



New York Sea Grant  
SUNY College at  
Brockport  
Brockport, NY 14420  
Tel: (585) 395-2638  
Fax: (585) 395-2466

## Lake Ontario Daily Inflows and Weekly Average Outflows (x1000 cubic feet per second)



New York's Sea Grant Extension Program provides Equal Program and Equal Employment Opportunities in association with Cornell Cooperative Extension, U.S. Department of Agriculture and U.S. Department of Commerce, and cooperating County Cooperative Extension Associations.